

iFinger[®]

iFinger : Client/Server Edition [®]

Meeting the Demands of the Corporate Environment.

By Dominique Louis
iFinger Ltd.

February 2003

Contents

Introduction	1
True Client/Server Technology	1
Distributed Architecture	1
Search Load Balancing	1
Thin Client GUI	1
Web Browser Front-End	1
iMode Support	1
Concurrency Licensing	2
Conclusion	2
Specifications	2

Introduction

iFinger Client/Server Edition builds on the LAN version, adding more flexibility and scalability

Specific improvements include :

- True Client/Server Technology
- Distributed Architecture
- Search Load Balancing
- Thin Client GUI
- Web Browser Front-End
- iMode Support.
- Concurrency Licensing

iFinger Client/Server will take advantage of your current LAN, WAN or intranet infrastructure.

True Client/Server Technology

iFinger Client/Server Edition has been designed from the ground up, to work in "real world" Client/Server environments, and uses TCP/IP to communicate between its various components.

Distributed Architecture

Due to its design, it allows the product to scale according to the customer's requirements. By distributed, we mean that you are able to have your web front-end on one machine, the Licensing Manager on a separate server, and the searching performed via a third server. It is the ideal multi-tiered solution. Please see Figure 1.

Search Load Balancing

Due to the distributed nature of the architecture, it is possible to spread the search load across several Searching Servers. This provides search results more quickly.

Thin Client GUI

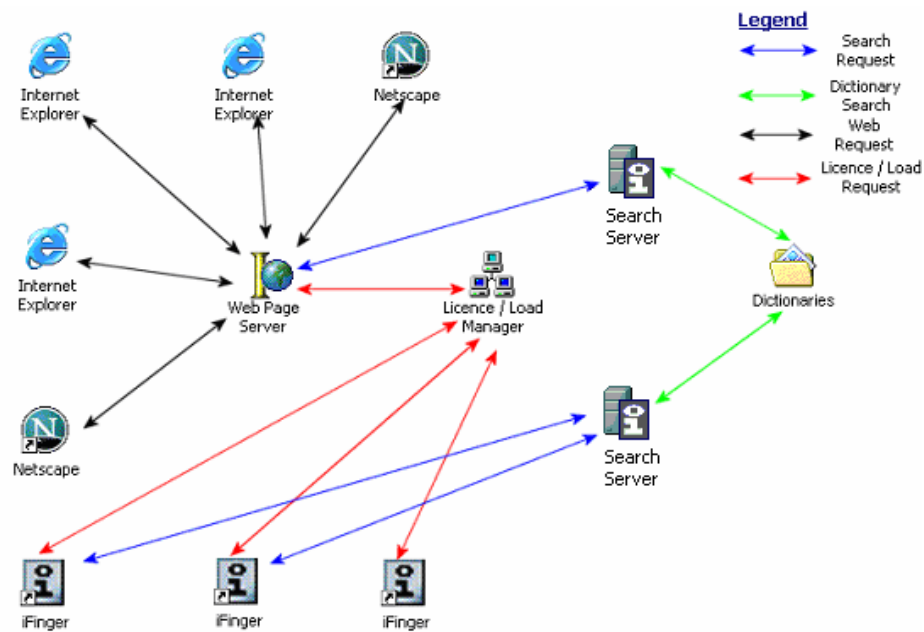
The iFinger GUI (Graphical User Interface) has been separated from the engine and licensing is delegated to the Licence Manager. This makes the User Interface more light weight and easier to deploy, whilst still supporting the mouse-over functionality that the current stand alone version supports.

Web Browser Front-End

Sometimes seen as the ultimate "thin client", you are now able to perform searches from within your browser of choice, making it easy to deploy throughout your organisation. Searches can be performed on your LAN, WAN, Intranet or even via the Internet, without the need for additional installation.

iMode Support

If your national mobile phone operators support iMode, we can provide a solution, based on the iFinger proven technology.



[Figure 1]

Concurrency Licensing

The Client/Server solution provides concurrent access to dictionaries. This allows users to perform searches simultaneously on the same dictionary, with no restriction on which users have access to the dictionaries.

Conclusion

The iFinger Client/Server Edition's multi-tiered, distributed design provides both a flexible and scalable solution to the world of indexed information retrieval.

Specifications

- License Manager

	Min	Recommended
OS	Win2000	Win2000+
CPU	800Mhz	1.2+ GHz
Network	10 MBS	100MBS
RAM	256MB	256+
Protocol	TCP/IP	TCP/IP

- Search Servers

	Min	Recommended
OS	Win2000	Win2000+
CPU	800Mhz	1.2+ GHz
Network	10 MBS	100MBS
RAM	256MB	256+ Per Search Server
Protocol	TCP/IP	TCP/IP

- CGI executables

	Min	Recommended
OS	Win2000	Win2000+
CPU	800Mhz	1.2+ GHz
Network	10 MBS	100MBS
RAM	128MB	128+
Protocol	TCP/IP	TCP/IP

- Windows Thin-Client GUI

	Min	Recommended
OS	Win98	Win2000+
CPU	800Mhz	800MHz+
Network	10 MBS	100MBS
RAM	128MB	128+
Protocol	TCP/IP	TCP/IP

- Browsers

Tested with the latest versions of Netscape and Internet Explorer, and should work with any browser that supports the JavaScript specification.